



Mandriva Linux

CeBIT 2006 – Linux Forum

David Barth, VP Engineering

Agenda

- **Mandriva, the company**
- **Mandriva, the consumer offering**
- **Mandriva, the new corporate offering**
- **Mandriva, future developments**

Mandriva

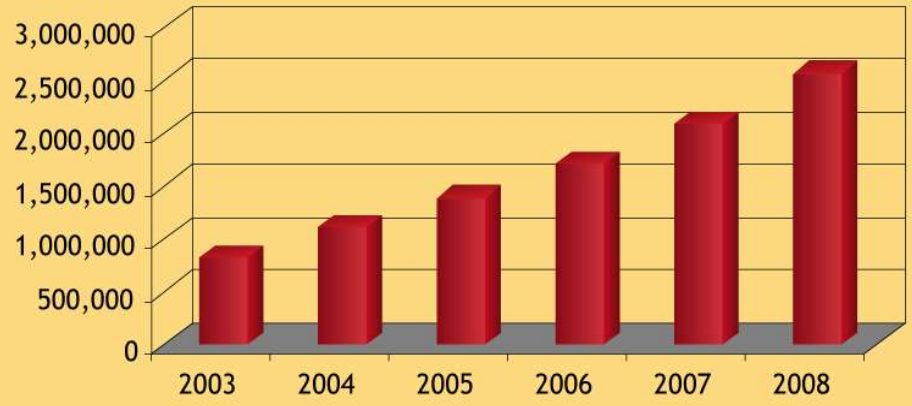
Company Overview



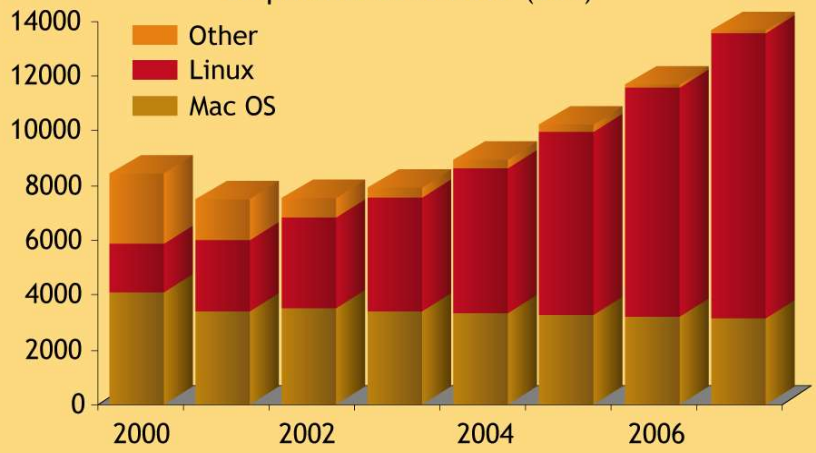
- Mandriva, formerly MandrakeSoft, is the editor of the award-winning Mandriva Linux OS, well-known as the most complete and easy to use Linux distribution
- Born on the Internet in 1998, funded by 3 Linux enthusiasts
- Mandriva Linux is now sold in 150 countries and used by ~7 million of users
- Headquarters in France and Brazil; sales offices and franchises in US, EMEA, Latin America, Russia, China
- Publicly traded (Marché Libre / Euronext)

Expanding the Linux market

WW Linux Server Shipments



WW Client Operating Environments (non-Windows*) New License Shipments 2000-2007 (000)



Mandriva Product Offering

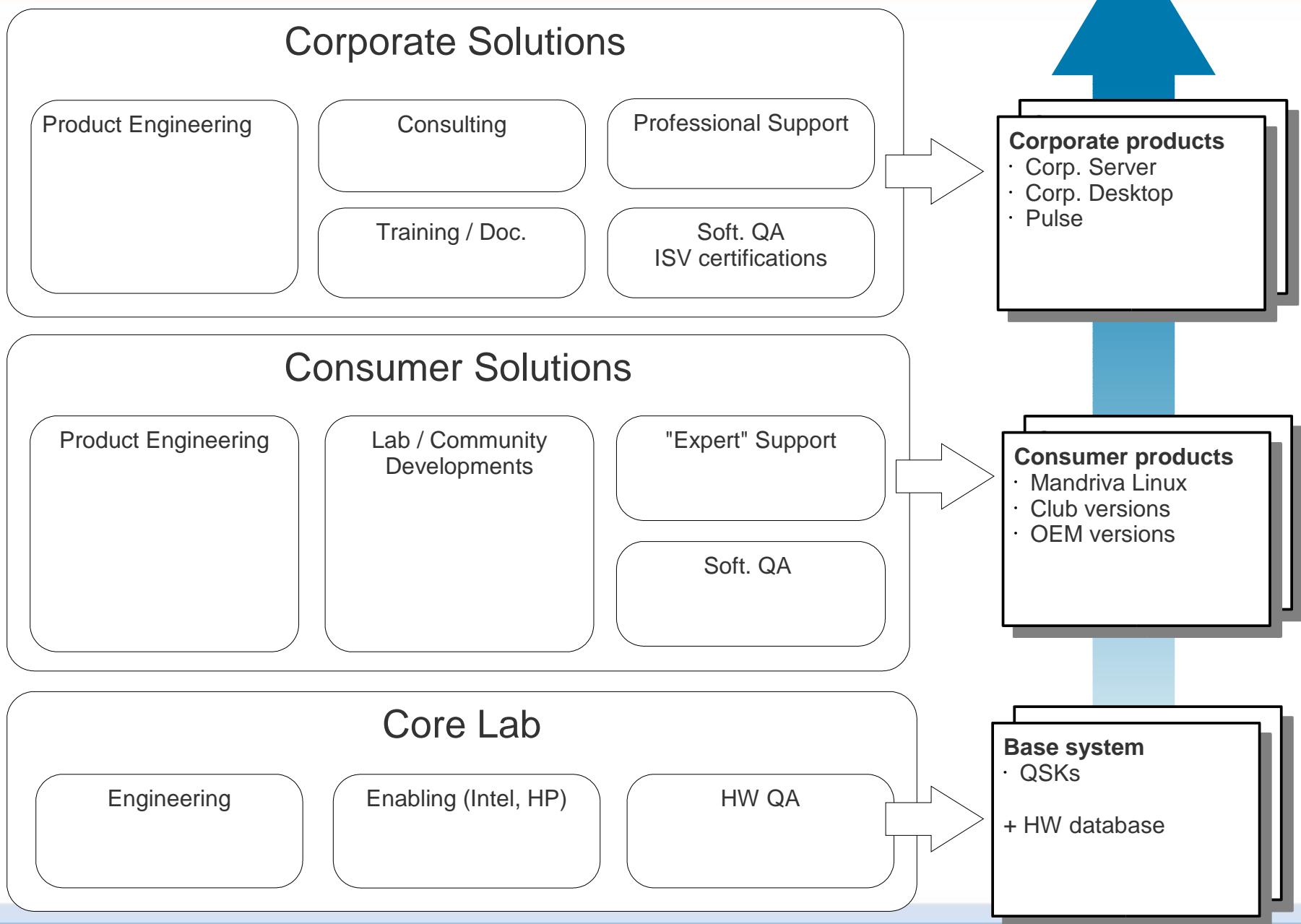
Consumer products



Corporate products

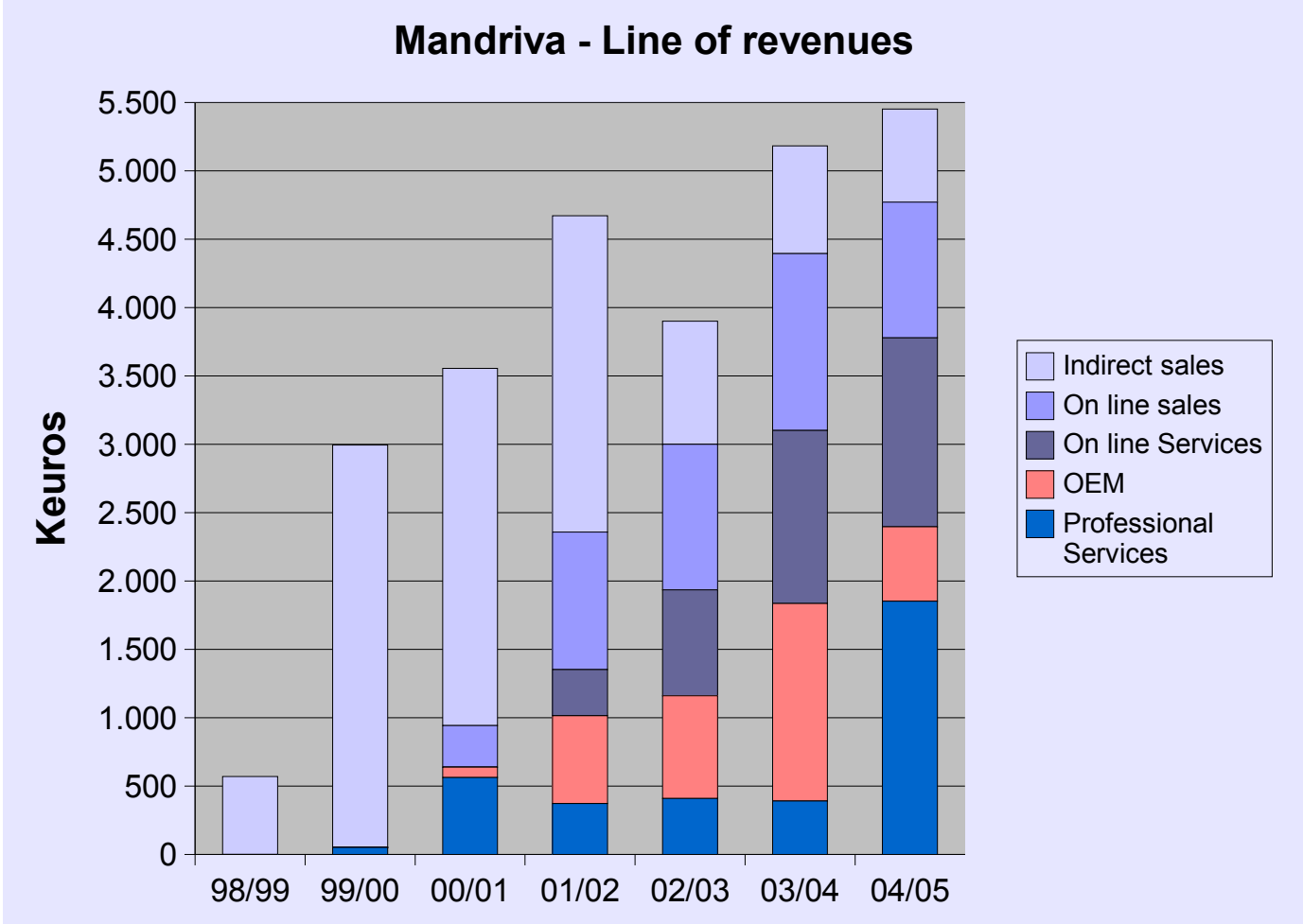


Engineering Organization Overview



Growing revenues

Yearly revenues for the last years



Main partners from the Mandriva ecosystem

Applications (ISVs)



Alinka, Adobe, Alcatel, BitDefender, Citrix, CodeWeavers, Connexant, eZ Systems, Hancom, Intel, Jahia, Kaspersky, Macromedia, NoMachine, Parasoft, PRO SIM Corp., RealNetworks, Skype, The Kompany, VariCAD, Win4Lin Inc., Wolfram Research, Zedonet, etc...

Constructeurs

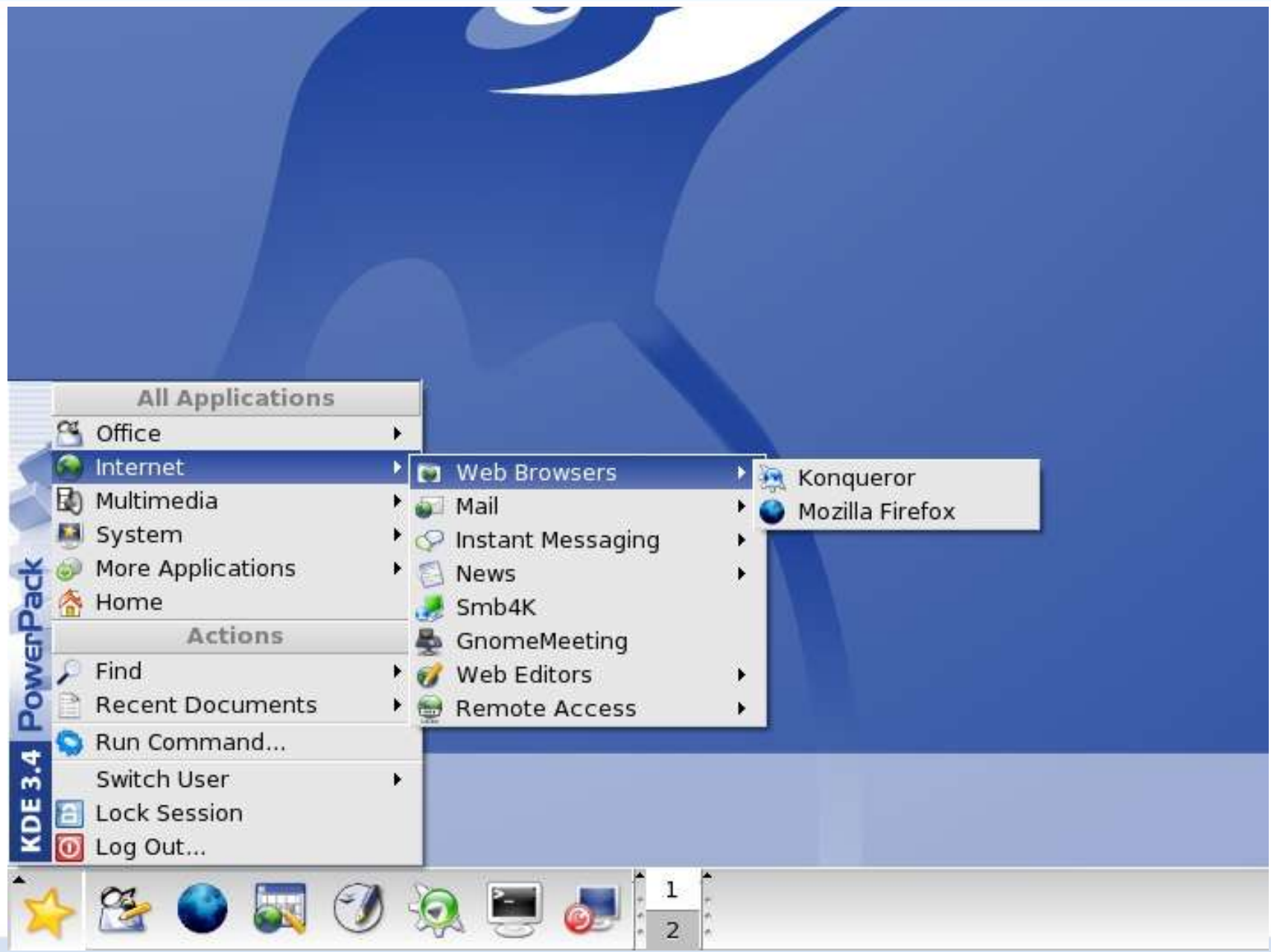


Current and upcoming development steps

- **Enterprise focused strategy, to develop growth and long-term profitability**
 - Accelerating commercial development
 - Launching new enterprise products
- **Dynamic Consumer product line, to create new technologies and drive innovation**
- **Financial strategy: strengthen financial ground**
 - By raising more capital
 - Benefit from more acquisitions
 - And also by transferring to a regulated market

Mandriva Linux

Consumer offering



Mandriva Linux 2006 – The leading Linux Desktop

- **Easy to install and setup**
 - Easy configuration and Internet access with the new Mandriva tools: Control Center, Connection wizard and network/wifi applet
 - Broad hardware support, validated on the latest Intel reference boards
- **Easy to use**
 - KDE desktop, with integrated search tool (Kat) and multimedia applications (Mindawn)
 - Robust Internet desktop with Firefox and Interactive Firewall for more security
 - Main proprietary applications (Acrobat, Flash, Skype) & misc firmware included
- **Easy to manage**
 - Automatic and regular updates (security fixes, new hardware support)
 - Advanced RPM management tools: urpmi, smart, deltarpm + online agent
 - Vast repository of pre-built packages with large community of contributors (contribs, others...)

Highlights

- Core Components & System: Linux Kernel 2.6.12, X.org 6.9, Glibc 2.3.5
- Graphical desktops: KDE 3.4, GNOME 2.10
- Office: Full Office suite compatible with Microsoft® Office, OpenOffice.org 2.0, Adobe® Reader® 7.0
- E-Mail Managers: Kontact and Evolution, Web browsers: Mozilla FireFox 1.0, Konqueror and Opera - full version, Instant Messaging compatible with MSN® Messenger, Voice over IP with Skype™- full version, FTP File Transfer, Web site creation
- Multimedia: The GIMP 2.2, video and audio players, CD/DVD burning, RealPlayer® 10, Flash® Player 7, Mindawn online music service
- Development: Development tools, editors, compilers: GCC 4.0 & Intel® compilers, J2SDK 1.4™ and J2RE™
- Mobility & Hardware: Automatic hardware detection and configuration*, Intel® Centrino™ Mobile Technology support, Wi-Fi and Bluetooth support

Other consumer products

- **Mandriva Move:** Mandriva on a key, sold with USB keys of up to 1.5Go and a CD for boot & pre-load
- **Mandriva Globetrotter:** Mandriva on a disk, with LaCie
- **Packs Éducatifs libres:** special editions for the french-speaking education market

- **Mandriva Online services**
 - Mandriva User Club
 - Mandriva Online
 - Mandriva Expert

Mandriva Corporate Offering

Mandriva Corporate Product Line

- **Mandriva Linux Corporate Desktop**

The technology of choice for Linux desktop migration projects and large Linux deployments in the enterprise

- **Mandriva Pulse**

A cross-platform management solution for installing and updating systems

- **Mandriva Linux Corporate Server**

The basic, cost-effective, Open Source building block for enterprise projects, with additional service stacks (LAMP, File & Print, Identity, etc.)

- **MLCS derivatives**

- *Firewall edition : MNF (Mandriva / Multi Network Firewall)*
- *HPC edition : Mandriva Clustering*

Mandriva Linux Corporate Server 3.0

Designed for large enterprises, public sector

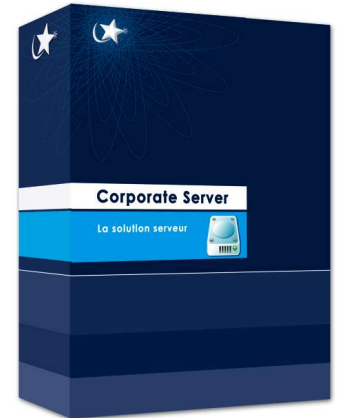
- 18-24 month release cycle
- 5 years maintenance minimum
- Selection of packages and interfaces designed for enterprise use

Easy to setup

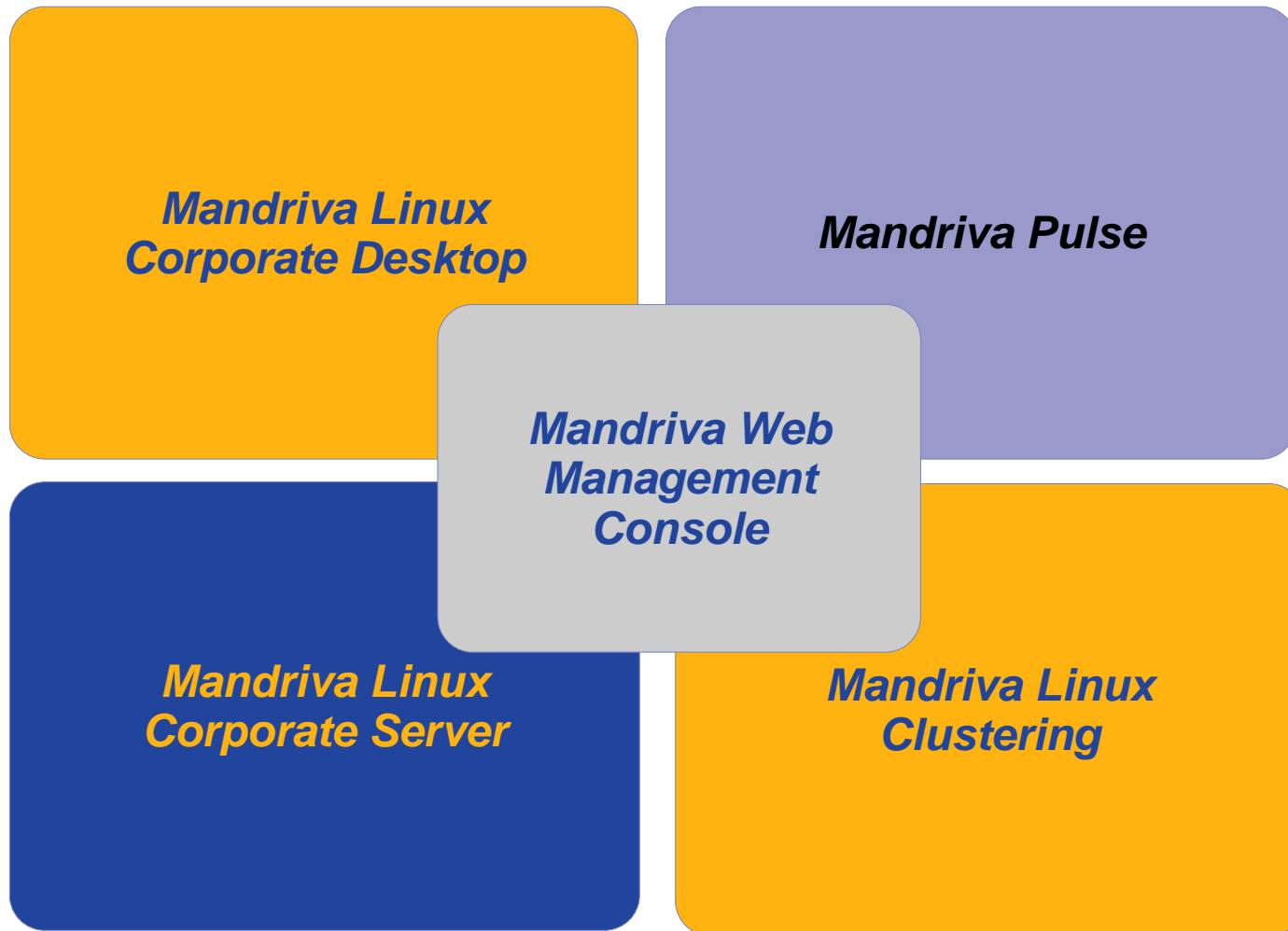
- Automated installation with leading detection technology, rer support
- Installation profiles for different application targets (LAMP, network services, ...)
- 16 configuration wizards for quick setup of the major services: LDAP, Postfix, PXE, DHCP, Bind, NFS...

Compatible with a wide range of hardware and software

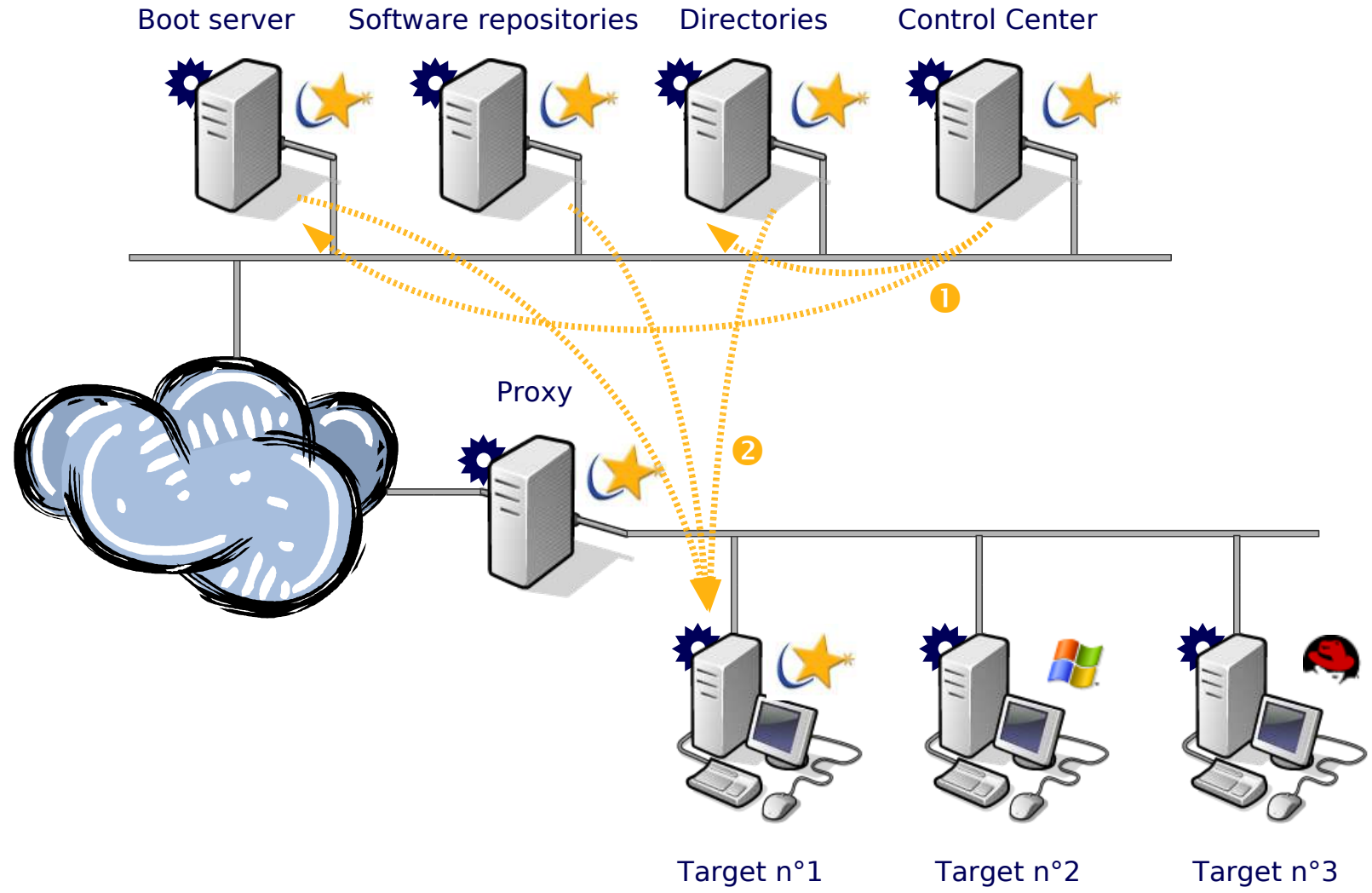
- IHV and ISV certifications
- Intel X86 / X86-64, SMP/HT/Dual Core & now *Power5*
- Serial ATA / Raid SATA



Mandriva Corporate Offering for 2006



Pulse Administration Tool



Product Features

- **Installation**

- Remote installation of the operating system (PXE standard)
- Installation and updates scenario customization: control HW detection, harddrive formating, software bundles, post-install parameter tuning
- Mandriva product installation scenarios provided by default

- **Configuration Management**

- Software updates and remote control through native Pulse agent
- Versioned scenarios, for maintaining split configurations or different installation profiles throughout time
- Scheduled or immediate scenario processing

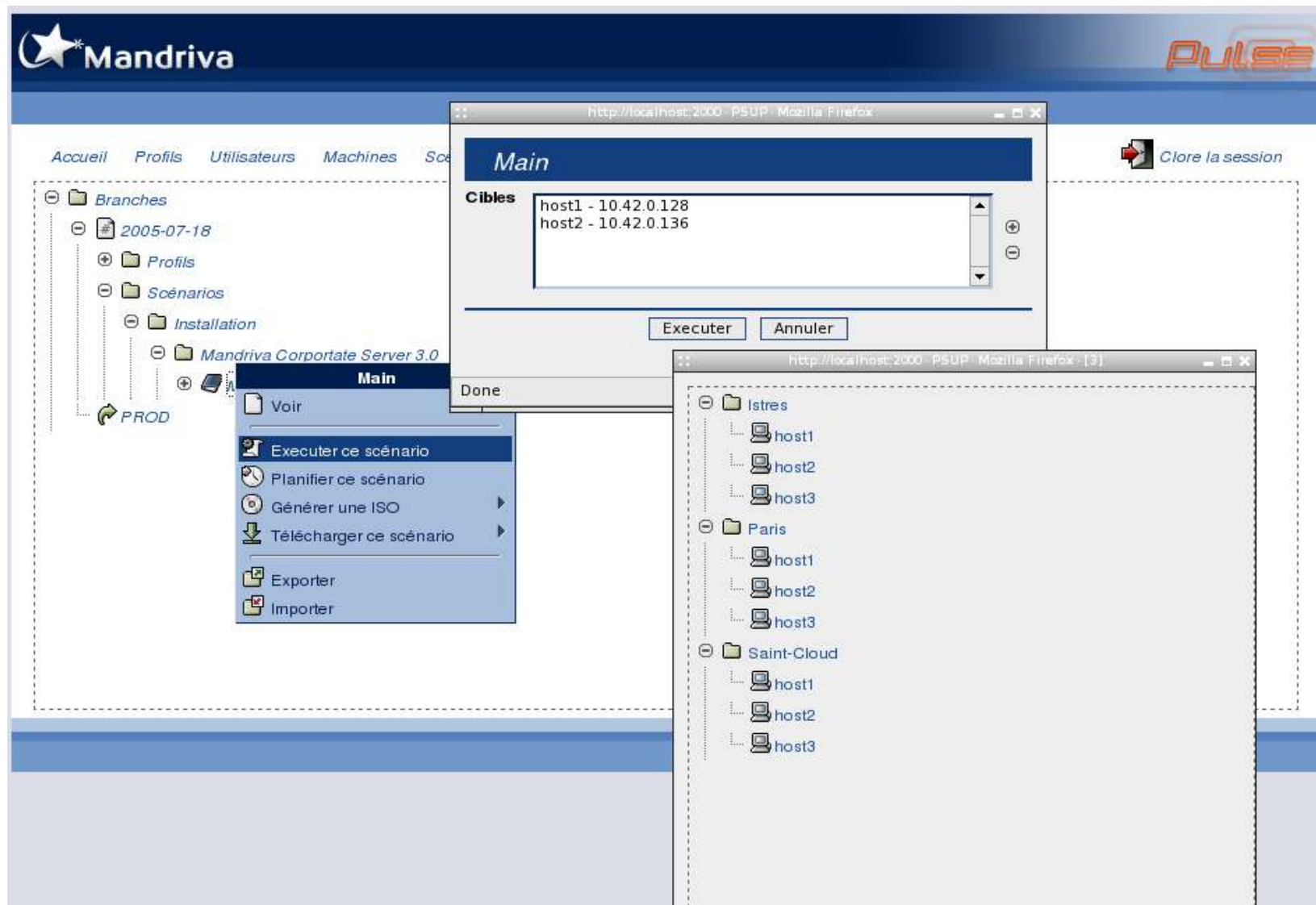
- **Software Distribution**

- Scheduled pre-transfer campaign, to upload updated packages on local sites, before triggering updates
- Creation of installation medias for offline or network constrained secure systems

Additional Features

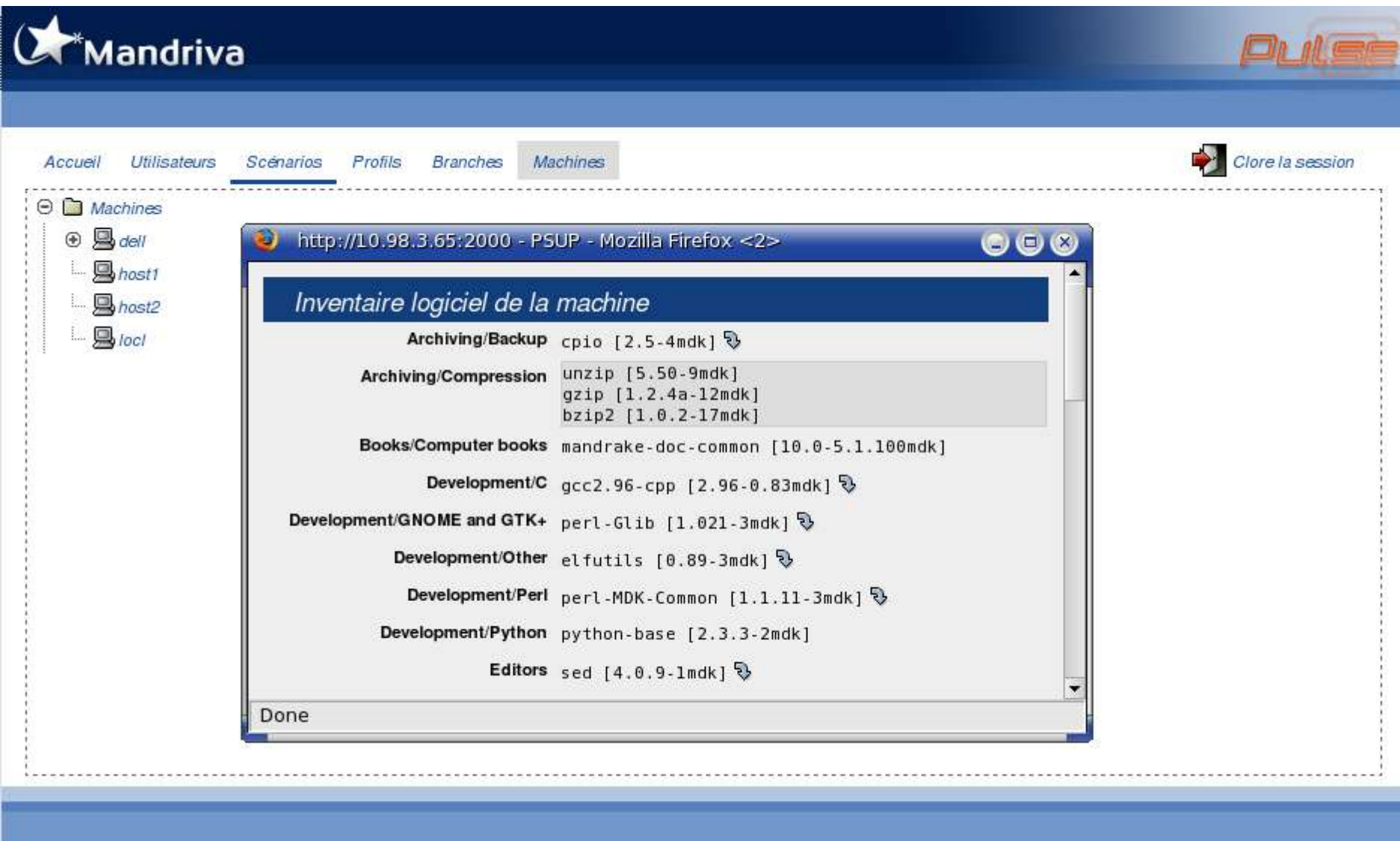
- **Monitoring and remote control**
 - Optional rescue partition (mksysb), with diagnosis and automation tools
 - Sample agent actions, for real-time monitoring and remote control
- **Native Enterprise Directory support: link directly to LDAP servers for bidirectional system definition, software stacks, installation scenarios or updates**
- **Open database for installation logs and software configuration reporting**
- **Multi-OS support: Mandriva Linux, RH, Suse, WinNT4, Win2K**
- **Scalable software distribution with P2P-like, one-copy per site, transfer technology**

Administration Interface samples (1/2)



The screenshot displays the Mandriva Pulse administration interface. The main window features a navigation menu with options: Accueil, Profils, Utilisateurs, Machines, and Scénarios. A tree view on the left shows a hierarchy of folders: Branches, 2005-07-18, Profils, Scénarios, Installation, and Mandriva Corporate Server 3.0. A context menu is open over the 'Main' scenario, listing actions: Voir, Executer ce scénario, Planifier ce scénario, Générer une ISO, Télécharger ce scénario, Exporter, and Importer. A modal dialog titled 'Main' is open, showing a list of targets: host1 - 10.42.0.128 and host2 - 10.42.0.136. Below the list are 'Executer' and 'Annuler' buttons. A 'Clôture la session' button is visible in the top right corner. A second window in the foreground shows a tree view of hosts organized by location: Istres (host1, host2, host3), Paris (host1, host2, host3), and Saint-Cloud (host1, host2, host3).

Administration Interface samples (2/2)



The screenshot displays the Mandriva Administration Interface. At the top, the Mandriva logo is on the left and the 'PULSE' logo is on the right. Below the header, a navigation menu includes 'Accueil', 'Utilisateurs', 'Scénarios', 'Profils', 'Branches', and 'Machines'. A 'Fermer la session' button is located in the top right corner. The main content area shows a tree view of machines under the 'Machines' folder, listing 'dell', 'host1', 'host2', and 'locl'. A browser window titled 'http://10.98.3.65:2000 - PSUP - Mozilla Firefox <2>' is open, displaying the 'Inventaire logiciel de la machine' page. This page lists installed software packages categorized by function:

Category	Package Name	Version
Archiving/Backup	cpio	[2.5-4mdk]
Archiving/Compression	unzip	[5.50-9mdk]
	gzip	[1.2.4a-12mdk]
	bzip2	[1.0.2-17mdk]
Books/Computer books	mandrake-doc-common	[10.0-5.1.100mdk]
Development/C	gcc2.96-cpp	[2.96-0.83mdk]
Development/GNOME and GTK+	perl-Glib	[1.021-3mdk]
Development/Other	elfutils	[0.89-3mdk]
Development/Perl	perl-MDK-Common	[1.1.11-3mdk]
Development/Python	python-base	[2.3.3-2mdk]
Editors	sed	[4.0.9-1mdk]

The browser window also shows a 'Done' status at the bottom.

Mandriva

Upcoming products

Release schedule

- **Q1 2006**
 - Mandriva 2006 “One”: the single CD consumer desktop, with Express installation mode, based on 2006
 - New online service...



Release schedule (continued)

- **Q2 2006**
 - Mandriva Pulse 1.8
 - Beta-program for the corporate release 4.0
- **Q3 2006**
 - Mandriva Linux Corporate Server 4.0
 - Mandriva Linux Corporate Desktop 4.0
- **Q4 2006**
 - Mandriva Linux 2007
 - Mandriva Console

New features for Mandriva Linux Corporate Server 4.0

- **Base LSB system and essential middleware, with additional autonomous stacks**
- **Latest stable technologies: Samba 3.2, OpenLDAP 2.3, CUPS 1.2, Xen/OpenVZ, PHP 5, PostgreSQL 8.1/2, etc.**
- **LDAP enabled out of the box, compatible with most enterprise directories and the integrated Identity stack (OpenLDAP, Kerberos, PKI)**
- **More management tools: RPM rollback support, user and local resources provisioning, pre-configured SNMP agents, simple monitoring systems**
- **Multiple clustering and virtualization technologies for HPC and HA configuration**
- **Enhanced ISV and IHV certifications**

New features for Mandriva Linux Corporate Desktop 4.0

- **Professional Desktop Interface:** latest stable KDE 3.5, improved Mandriva "look & feel" with streamlined user interfaces and a simpler desktop organization (menus, icons, applications)
- **Support for corporate applications:** Wine for legacy applications, complete range of terminal technologies (3270/5250, RDP, X) and remote session protocols, with additional commercial ISV products
- **Highly Secure Desktop:** LDAP/Kerberos enabled, support for most smartcards, tokens, fingerprint readers, and encrypted home partition
- **Manageable Desktop:** central control and lockdown of user configurations, with LDAP connector, ZeroConf support, etc.
- **State of the art HW support:** Strategic partnership with Intel and HP, improved HW detection & support (like hotplug devices, monitors, ...), plus new Mandriva HW database with more than 200.000 configurations
- **Enhanced laptop comfort:** officially supported suspend & hibernate, Improved boot sequence and startup speed

And the latest developments in the community / cooker

- **KDE4**
 - More coders paid by Mandriva to speed up the release
 - More action on the KDE Search feature, through the Nepomuk project (Semantic Desktop - EU R&D)
 - KDE/Solid, OSDL Desktop WG (also X): Mandriva offering support in its online hardware DB and all GPL configuration tools
 - More funding and eye candy...
- **OpenGL / X.org**
 - Mandriva joined forces with the (few/new) EGL developers, embarking in a long journey to improve the “State of Linux Graphics”
 - Cooker to feature first pre-built EGL playground (XGL already)
 - More to come when arguments^w...discussions settle
- **Tools and console**
 - New web-based console in the lab, Webmin-compatible, MMC-like, Perl5, object-oriented: join the cooker party!
- **Development community: more contributors wanted! new web interface wizard and access to cooker submission API mode**

Q & A

Thank you for your attention